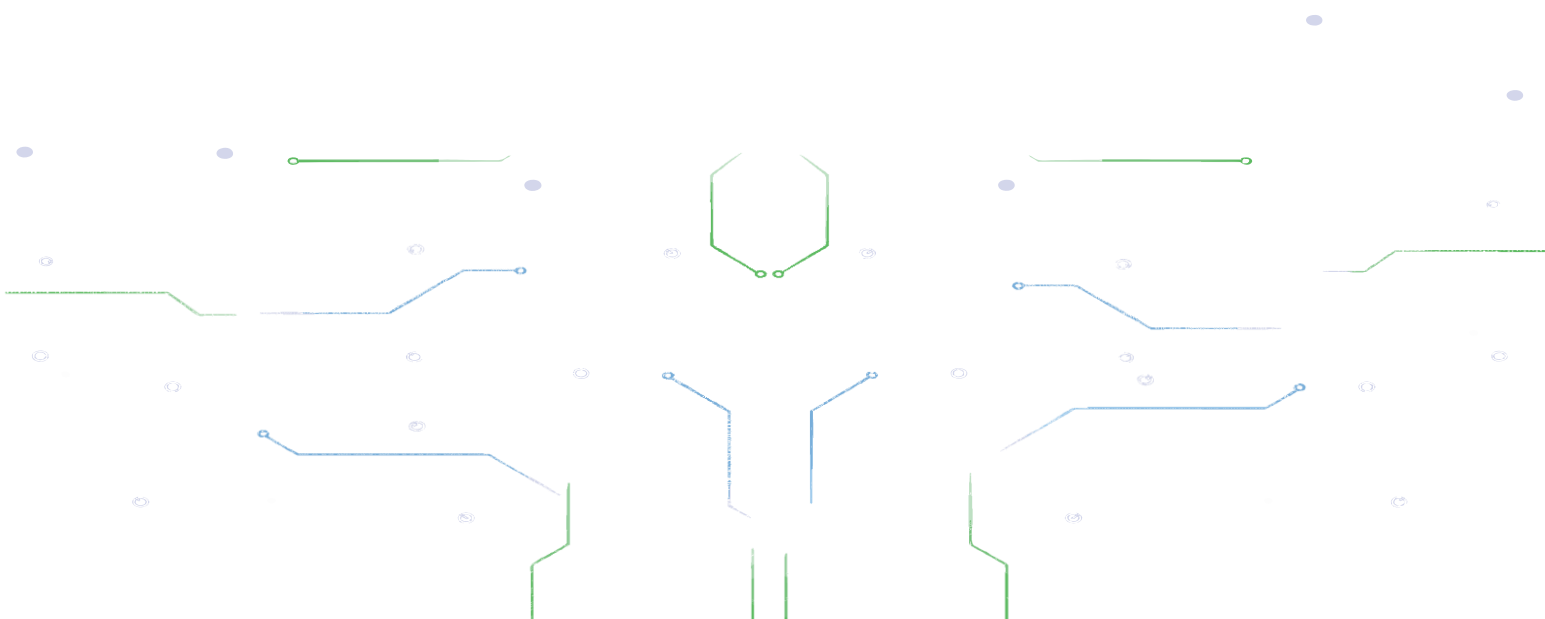


lakuaja.com



Lakuaja.com – PT. OPS Sinergi Indonesia

Lakuaja.com adalah situs onlineshop yang berdiri di bawah PT. OPS Sinergi Indonesia. Saat ini menyediakan berbagai kebutuhan elektrikal seperti Kabel Supreme, Lampu Philips, Schneider Elektric, Legrand, Kabel Tray, Kap Lampu dan aksesoris listrik lainNYAF.





KATALOG KABEL SUPREME

FLEXIBLE CABLE NYAF 450/750 VOLT

NYAF 1.5 MM²



DIMENSIONAL & MECHANICAL DATA

| | | | |
|----------------------------------|---|------|-----------------|
| Nominal Cross and Sectional Area | : | 1.5 | mm ² |
| No Of wire | : | 1 | pcs |
| Maximum Diameter Of Wire | : | 0.25 | mm |
| Insulation | : | 0.7 | mm |
| Overall Diameter | : | 2.9 | mm |
| Net Weight | : | 19 | Kg/Km |
| Bending Radius Minimum | : | 70 | mm |
| Standart Delivery Length | : | 100 | M |

ELEKTRIKAL DATA

| Resistance at 20 °C | Current Carrying Capacity at 30 °C | Short Circuit Current of Conductor at 1.0 sec |
|----------------------------------|------------------------------------|---|
| DC Conductor Maximal : 13.3 Q/Km | In Pipe : 15 A | : 0.17 kA |
| Insulation Minimum : 50 MQ/Km | In Air : 24 A | |

NYAF 2.5 MM²



DIMENSIONAL & MECHANICAL DATA

| | | | |
|----------------------------------|---|------|-----------------|
| Nominal Cross and Sectional Area | : | 2.5 | mm ² |
| No Of wire | : | 1 | pcs |
| Maximum Diameter Of Wire | : | 0.25 | mm |
| Insulation | : | 0.8 | mm |
| Overall Diameter | : | 3.6 | mm |
| Net Weight | : | 31 | Kg/Km |
| Bending Radius Minimum | : | 90 | mm |
| Standart Delivery Length | : | 100 | M |

ELEKTRIKAL DATA

| Resistance at 20 °C | Current Carrying Capacity at 30 °C | Short Circuit Current of Conductor at 1.0 sec |
|----------------------------------|------------------------------------|---|
| DC Conductor Maximal : 7.98 Q/Km | In Pipe : 20 A | : 0.29 kA |
| Insulation Minimum : 50 MQ/Km | In Air : 32 A | |



KATALOG KABEL SUPREME

FLEXIBLE CABLE NYAF 450/750 VOLT

NYAF 4 MM²



DIMENSIONAL & MECHANICAL DATA

| | | | |
|----------------------------------|---|-----|-----------------|
| Nominal Cross and Sectional Area | : | 4 | mm ² |
| No Of wire | : | 1 | pcs |
| Maximum Diameter Of Wire | : | 0.3 | mm |
| Insulation | : | 0.8 | mm |
| Overall Diameter | : | 4.1 | mm |
| Net Weight | : | 46 | Kg/Km |
| Bending Radius Minimum | : | 100 | mm |
| Standart Delivery Length | : | 100 | M |

ELEKTRIKAL DATA

| Resistance at 20 °C | Current Carrying Capacity at 30 °C | Short Circuit Current of Conductor at 1.0 sec |
|----------------------------------|------------------------------------|---|
| DC Conductor Maximal : 4.95 Q/Km | In Pipe : 25 A | : 0.46 kA |
| Insulation Minimum : 50 MQ/Km | In Air : 42 A | |

NYAF 6 MM²



DIMENSIONAL & MECHANICAL DATA

| | | | |
|----------------------------------|---|-----|-----------------|
| Nominal Cross and Sectional Area | : | 6 | mm ² |
| No Of wire | : | 1 | pcs |
| Maximum Diameter Of Wire | : | 0.3 | mm |
| Insulation | : | 0.8 | mm |
| Overall Diameter | : | 4.7 | mm |
| Net Weight | : | 64 | Kg/Km |
| Bending Radius Minimum | : | 110 | mm |
| Standart Delivery Length | : | 100 | M |

ELEKTRIKAL DATA

| Resistance at 20 °C | Current Carrying Capacity at 30 °C | Short Circuit Current of Conductor at 1.0 sec |
|----------------------------------|------------------------------------|---|
| DC Conductor Maximal : 3.30 Q/Km | In Pipe : 33 A | : 0.69 kA |
| Insulation Minimum : 50 MQ/Km | In Air : 54 A | |



KATALOG KABEL SUPREME

FLEXIBLE CABLE NYAF 450/750 VOLT

NYAF 10 MM²



DIMENSIONAL & MECHANICAL DATA

| | | | |
|----------------------------------|---|-----|-----------------|
| Nominal Cross and Sectional Area | : | 10 | mm ² |
| No Of wire | : | 1 | pcs |
| Maximum Diameter Of Wire | : | 0.4 | mm |
| Insulation | : | 1.0 | mm |
| Overall Diameter | : | 6.1 | mm |
| Net Weight | : | 110 | Kg/Km |
| Bending Radius Minimum | : | 150 | mm |
| Standart Delivery Length | : | 100 | M |

ELEKTRIKAL DATA

| Resistance at 20 °C | | Current Carrying Capacity at 30 °C | Short Circuit Current of Conductor at 1.0 sec |
|----------------------|-------------|------------------------------------|---|
| DC Conductor Maximal | : 1.91 Q/Km | In Pipe : 45 A | : 1.16 kA |
| Insulation Minimum | : 50 MQ/Km | In Air : 73 A | |

NYAF 16 MM²



DIMENSIONAL & MECHANICAL DATA

| | | | |
|----------------------------------|---|-------|-----------------|
| Nominal Cross and Sectional Area | : | 16 | mm ² |
| No Of wire | : | 1 | pcs |
| Maximum Diameter Of Wire | : | 0.4 | mm |
| Insulation | : | 1.0 | mm |
| Overall Diameter | : | 8 | mm |
| Net Weight | : | 180 | Kg/Km |
| Bending Radius Minimum | : | 210 | mm |
| Standart Delivery Length | : | 2.000 | M |

ELEKTRIKAL DATA

| Resistance at 20 °C | | Current Carrying Capacity at 30 °C | Short Circuit Current of Conductor at 1.0 sec |
|----------------------|-------------|------------------------------------|---|
| DC Conductor Maximal | : 1.21 Q/Km | In Pipe : 61 A | : 1.84 kA |
| Insulation Minimum | : 40 MQ/Km | In Air : 98 A | |



KATALOG KABEL SUPREME

FLEXIBLE CABLE NYAF 450/750 VOLT

NYAF 25 MM²



DIMENSIONAL & MECHANICAL DATA

| | | | |
|----------------------------------|---|-------|-----------------|
| Nominal Cross and Sectional Area | : | 25 | mm ² |
| No Of wire | : | 1 | pcs |
| Maximum Diameter Of Wire | : | 0.4 | mm |
| Insulation | : | 1.2 | mm |
| Overall Diameter | : | 10.1 | mm |
| Net Weight | : | 280 | Kg/Km |
| Bending Radius Minimum | : | 270 | mm |
| Standart Delivery Length | : | 1.000 | M |

ELEKTRIKAL DATA

| Resistance at 20 °C | Current Carrying Capacity at 30 °C | Short Circuit Current of Conductor at 1.0 sec |
|-----------------------------------|------------------------------------|---|
| DC Conductor Maximal : 0.780 Ω/Km | In Pipe : 83 A | : 2.88 kA |
| Insulation Minimum : 40 MΩ/Km | In Air : 128 A | |

NYAF 35 MM²



DIMENSIONAL & MECHANICAL DATA

| | | | |
|----------------------------------|---|-------|-----------------|
| Nominal Cross and Sectional Area | : | 35 | mm ² |
| No Of wire | : | 1 | pcs |
| Maximum Diameter Of Wire | : | 0.4 | mm |
| Insulation | : | 1.2 | mm |
| Overall Diameter | : | 11.2 | mm |
| Net Weight | : | 367 | Kg/Km |
| Bending Radius Minimum | : | 300 | mm |
| Standart Delivery Length | : | 1.000 | M |

ELEKTRIKAL DATA

| Resistance at 20 °C | Current Carrying Capacity at 30 °C | Short Circuit Current of Conductor at 1.0 sec |
|-----------------------------------|------------------------------------|---|
| DC Conductor Maximal : 0.554 Ω/Km | In Pipe : 103 A | : 4.03 kA |
| Insulation Minimum : 40 MΩ/Km | In Air : 158 A | |



KATALOG KABEL SUPREME

FLEXIBLE CABLE NYAF 450/750 VOLT

NYAF 50 MM²



DIMENSIONAL & MECHANICAL DATA

| | | | |
|----------------------------------|---|-------|-----------------|
| Nominal Cross and Sectional Area | : | 50 | mm ² |
| No Of wire | : | 1 | pcs |
| Maximum Diameter Of Wire | : | 0.4 | mm |
| Insulation | : | 1.4 | mm |
| Overall Diameter | : | 13.8 | mm |
| Net Weight | : | 538 | Kg/Km |
| Bending Radius Minimum | : | 360 | mm |
| Standart Delivery Length | : | 1.000 | M |

ELEKTRIKAL DATA

Resistance at 20 °C

| | | | |
|----------------------|---|-------|-------|
| DC Conductor Maximal | : | 0.386 | Ω/Km |
| Insulation Minimum | : | 30 | MΩ/Km |

Current Carrying Capacity at 30 °C

| | | | |
|---------|---|-----|---|
| In Pipe | : | 132 | A |
| In Air | : | 197 | A |

Short Circuit Current of Conductor at 1.0 sec

: 5.75 kA

NYAF 70 MM²



DIMENSIONAL & MECHANICAL DATA

| | | | |
|----------------------------------|---|-------|-----------------|
| Nominal Cross and Sectional Area | : | 70 | mm ² |
| No Of wire | : | 1 | pcs |
| Maximum Diameter Of Wire | : | 0.5 | mm |
| Insulation | : | 1.4 | mm |
| Overall Diameter | : | 15.1 | mm |
| Net Weight | : | 916 | Kg/Km |
| Bending Radius Minimum | : | 420 | mm |
| Standart Delivery Length | : | 1.000 | M |

ELEKTRIKAL DATA

Resistance at 20 °C

| | | | |
|----------------------|---|-------|-------|
| DC Conductor Maximal | : | 0.554 | Ω/Km |
| Insulation Minimum | : | 40 | MΩ/Km |

Current Carrying Capacity at 30 °C

| | | | |
|---------|---|-----|---|
| In Pipe | : | 103 | A |
| In Air | : | 158 | A |

Short Circuit Current of Conductor at 1.0 sec

: 8.05 kA



KATALOG KABEL SUPREME

FLEXIBLE CABLE NYAF 450/750 VOLT

NYAF 95 MM²



DIMENSIONAL & MECHANICAL DATA

| | | | |
|----------------------------------|---|-------|-----------------|
| Nominal Cross and Sectional Area | : | 95 | mm ² |
| No Of wire | : | 1 | pcs |
| Maximum Diameter Of Wire | : | 0.5 | mm |
| Insulation | : | 1.6 | mm |
| Overall Diameter | : | 17.9 | mm |
| Net Weight | : | 1.210 | Kg/Km |
| Bending Radius Minimum | : | 500 | mm |
| Standart Delivery Length | : | 1.000 | M |

ELEKTRIKAL DATA

| Resistance at 20 °C | | Current Carrying Capacity at 30 °C | Short Circuit Current of Conductor at 1.0 sec |
|----------------------|--------------|------------------------------------|---|
| DC Conductor Maximal | : 0.206 Q/Km | In Pipe : 197 A | : 10.93 kA |
| Insulation Minimum | : 30 MQ/Km | In Air : 290 A | |

NYAF 120 MM²



DIMENSIONAL & MECHANICAL DATA

| | | | |
|----------------------------------|---|-------|-----------------|
| Nominal Cross and Sectional Area | : | 120 | mm ² |
| No Of wire | : | 1 | pcs |
| Maximum Diameter Of Wire | : | 0.5 | mm |
| Insulation | : | 1.6 | mm |
| Overall Diameter | : | 19.6 | mm |
| Net Weight | : | 1.525 | Kg/Km |
| Bending Radius Minimum | : | 540 | mm |
| Standart Delivery Length | : | 1.000 | M |

ELEKTRIKAL DATA

| Resistance at 20 °C | | Current Carrying Capacity at 30 °C | Short Circuit Current of Conductor at 1.0 sec |
|----------------------|--------------|------------------------------------|---|
| DC Conductor Maximal | : 0.161 Q/Km | In Pipe : 235 A | : 13.80 kA |
| Insulation Minimum | : 30 MQ/Km | In Air : 345 A | |



KATALOG KABEL SUPREME

FLEXIBLE CABLE NYAF 450/750 VOLT

NYAF 150 MM²



DIMENSIONAL & MECHANICAL DATA

| | | | |
|----------------------------------|---|-------|-----------------|
| Nominal Cross and Sectional Area | : | 150 | mm ² |
| No Of wire | : | 1 | pcs |
| Maximum Diameter Of Wire | : | 0.5 | mm |
| Insulation | : | 1.8 | mm |
| Overall Diameter | : | 21.5 | mm |
| Net Weight | : | 1.899 | Kg/Km |
| Bending Radius Minimum | : | 610 | mm |
| Standart Delivery Length | : | 1.000 | M |

ELEKTRIKAL DATA

| Resistance at 20 °C | | Current Carrying Capacity at 30 °C | Short Circuit Current of Conductor at 1.0 sec |
|----------------------|--------------|------------------------------------|---|
| DC Conductor Maximal | : 0.129 Q/Km | In Pipe : - A | : 17.25 kA |
| Insulation Minimum | : 20 MQ/Km | In Air : 390 A | |

NYAF 185 MM²



DIMENSIONAL & MECHANICAL DATA

| | | | |
|----------------------------------|---|-------|-----------------|
| Nominal Cross and Sectional Area | : | 185 | mm ² |
| No Of wire | : | 1 | pcs |
| Maximum Diameter Of Wire | : | 0.5 | mm |
| Insulation | : | 2 | mm |
| Overall Diameter | : | 24.6 | mm |
| Net Weight | : | 2.345 | Kg/Km |
| Bending Radius Minimum | : | 690 | mm |
| Standart Delivery Length | : | 1.000 | M |

ELEKTRIKAL DATA

| Resistance at 20 °C | | Current Carrying Capacity at 30 °C | Short Circuit Current of Conductor at 1.0 sec |
|----------------------|--------------|------------------------------------|---|
| DC Conductor Maximal | : 0.106 Q/Km | In Pipe : - A | : 21.28 kA |
| Insulation Minimum | : 20 MQ/Km | In Air : 445 A | |



KATALOG KABEL SUPREME

FLEXIBLE CABLE NYAF 450/750 VOLT

NYAF 240 MM²



DIMENSIONAL & MECHANICAL DATA

| | | | |
|----------------------------------|---|-------|-----------------|
| Nominal Cross and Sectional Area | : | 240 | mm ² |
| No Of wire | : | 1 | pcs |
| Maximum Diameter Of Wire | : | 0.5 | mm |
| Insulation | : | 2.2 | mm |
| Overall Diameter | : | 26.5 | mm |
| Net Weight | : | 3.066 | Kg/Km |
| Bending Radius Minimum | : | 740 | mm |
| Standart Delivery Length | : | 1.000 | M |

ELEKTRIKAL DATA

| Resistance at 20 °C | | Current Carrying Capacity at 30 °C | Short Circuit Current of Conductor at 1.0 sec |
|----------------------|---------------|------------------------------------|---|
| DC Conductor Maximal | : 0.0801 Q/Km | In Pipe : - A | : 27.60 kA |
| Insulation Minimum | : 20 MQ/Km | In Air : 525 A | |

NYAF 300 MM²



DIMENSIONAL & MECHANICAL DATA

| | | | |
|----------------------------------|---|-------|-----------------|
| Nominal Cross and Sectional Area | : | 300 | mm ² |
| No Of wire | : | 1 | pcs |
| Maximum Diameter Of Wire | : | 0.5 | mm |
| Insulation | : | 2.4 | mm |
| Overall Diameter | : | 29.6 | mm |
| Net Weight | : | 3.109 | Kg/Km |
| Bending Radius Minimum | : | 890 | mm |
| Standart Delivery Length | : | 500 | M |

ELEKTRIKAL DATA

| Resistance at 20 °C | | Current Carrying Capacity at 30 °C | Short Circuit Current of Conductor at 1.0 sec |
|----------------------|---------------|------------------------------------|---|
| DC Conductor Maximal | : 0.0641 Q/Km | In Pipe : - A | : 34.50 kA |
| Insulation Minimum | : 20 MQ/Km | In Air : 605 A | |