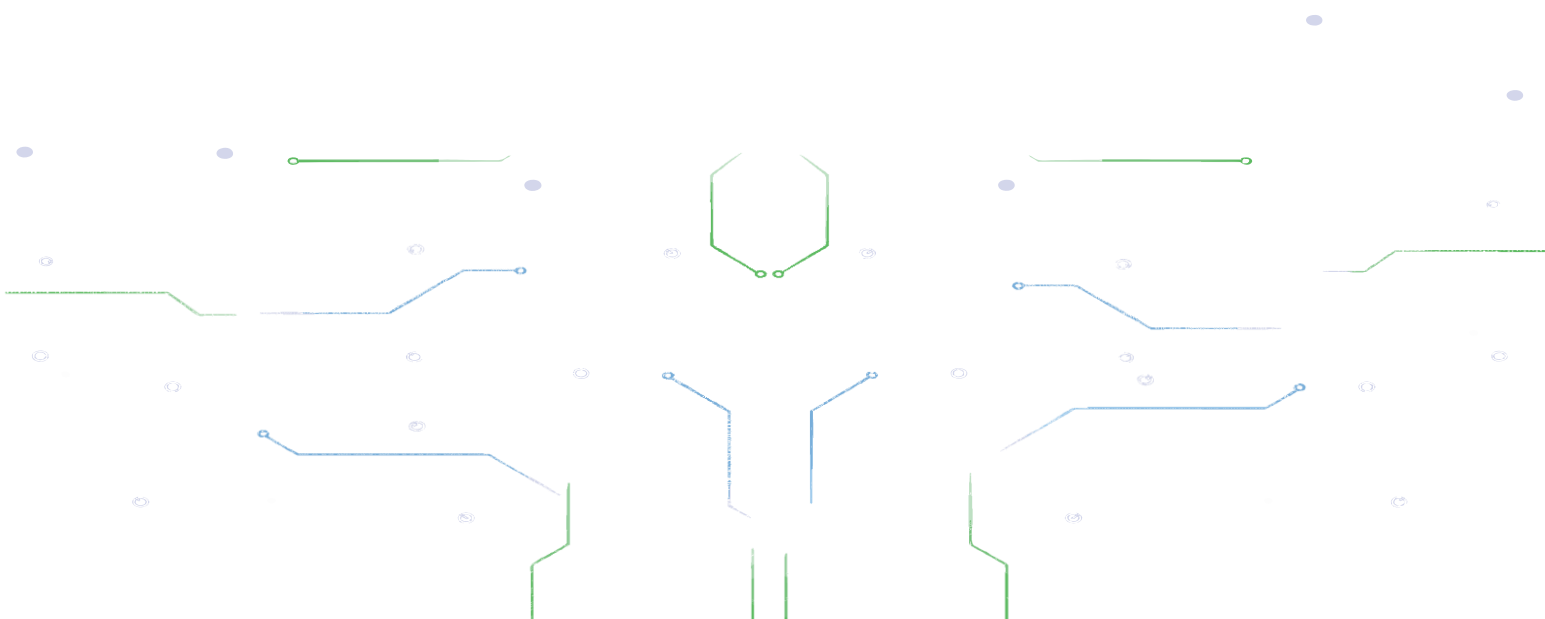


# **lakuaja.com**



## **Lakuaja.com – PT. OPS Sinergi Indonesia**

Lakuaja.com adalah situs onlineshop yang berdiri di bawah PT. OPS Sinergi Indonesia. Saat ini menyediakan berbagai kebutuhan elektrik seperti Kabel Supreme, Lampu Philips, Schneider Electric, Legrand, Kabel Tray, Kap Lampu dan aksesoris listrik lainnya.





# Lakuaja.com



## KATALOG KABEL SUPREME

### FLEXIBLE CABLE NYMHY 300/500 VOLT

#### NYMHY 2x0.75 MM<sup>2</sup>



#### DIMENSIONAL & MECHANICAL DATA

Nominal Cross and Sectional Area	:	0.75	mm <sup>2</sup>
Maximum Diameter of Wire	:	0.2	pcs
Insulation	:	0.6	mm
Outer Sheath	:	0.8	mm
Overall Diameter	:	6.3	mm
Net Weight	:	54	Kg/Km
Bending Radius Minimum	:	120	mm
Standart Delivery Length	:	100 or 2.000	M

#### ELEKTRIKAL DATA

##### Resistance at 20 °C

DC Conductor Maximal	:	26	Ω/Km
Insulation Minimum	:	50	MΩ/Km

##### Current Carrying Capacity at 30 °C

In Air	:	9	A
--------	---	---	---

##### Short Circuit Current of Conductor at 1.0 sec

:	0.10	kA
---	------	----

#### NYMHY 2x1.5 MM<sup>2</sup>



#### DIMENSIONAL & MECHANICAL DATA

Nominal Cross and Sectional Area	:	1.5	mm <sup>2</sup>
Maximum Diameter of Wire	:	0.25	pcs
Insulation	:	0.7	mm
Outer Sheath	:	0.8	mm
Overall Diameter	:	7.5	mm
Net Weight	:	82	Kg/Km
Bending Radius Minimum	:	140	mm
Standart Delivery Length	:	100 or 2000	M

#### ELEKTRIKAL DATA

##### Resistance at 20 °C

DC Conductor Maximal	:	13.3	Ω/Km
Insulation Minimum	:	50	MΩ/Km

##### Current Carrying Capacity at 30 °C

In Air	:	19	A
--------	---	----	---

##### Short Circuit Current of Conductor at 1.0 sec

:	0.19	kA
---	------	----



## KATALOG KABEL SUPREME

### FLEXIBLE CABLE NYMHY 300/500 VOLT

#### NYMHY 2x2.5 MM<sup>2</sup>



#### DIMENSIONAL & MECHANICAL DATA

Nominal Cross and Sectional Area	:	2.5	mm <sup>2</sup>
Maximum Diameter of Wire	:	0.25	pcs
Insulation	:	0.8	mm
Outer Sheath	:	1.0	mm
Overall Diameter	:	9.2	mm
Net Weight	:	128	Kg/Km
Bending Radius Minimum	:	180	mm
Standart Delivery Length	:	100 or 2000	M

#### ELEKTRIKAL DATA

##### Resistance at 20 °C

DC Conductor Maximal	:	7.98	Ω/Km
Insulation Minimum	:	50	MΩ/Km

##### Current Carrying Capacity at 30 °C

In Air	:	25	A
--------	---	----	---

##### Short Circuit Current of Conductor at 1.0 sec

:	0.32	kA
---	------	----

#### NYMHY 3x0.75 MM<sup>2</sup>



#### DIMENSIONAL & MECHANICAL DATA

Nominal Cross and Sectional Area	:	0.75	mm <sup>2</sup>
Maximum Diameter of Wire	:	0.2	pcs
Insulation	:	0.6	mm
Outer Sheath	:	0.8	mm
Overall Diameter	:	6.6	mm
Net Weight	:	64	Kg/Km
Bending Radius Minimum	:	120	mm
Standart Delivery Length	:	100 or 2.000	M

#### ELEKTRIKAL DATA

##### Resistance at 20 °C

DC Conductor Maximal	:	26	Ω/Km
Insulation Minimum	:	50	MΩ/Km

##### Current Carrying Capacity at 30 °C

In Air	:	4	A
--------	---	---	---

##### Short Circuit Current of Conductor at 1.0 sec

:	0.10	kA
---	------	----



## KATALOG KABEL SUPREME

### FLEXIBLE CABLE NYMHY 300/500 VOLT

#### NYMHY 3x1.5 MM<sup>2</sup>



#### DIMENSIONAL & MECHANICAL DATA

Nominal Cross and Sectional Area	:	1.5	mm <sup>2</sup>
Maximum Diameter of Wire	:	0.25	pcs
Insulation	:	0.7	mm
Outer Sheath	:	0.9	mm
Overall Diameter	:	8.1	mm
Net Weight	:	104	Kg/Km
Bending Radius Minimum	:	150	mm
Standart Delivery Length	:	100 or 2000	M

#### ELEKTRIKAL DATA

Resistance at 20 °C	Current Carrying Capacity at 30 °C	Short Circuit Current of Conductor at 1.0 sec
DC Conductor Maximal : 13.3 Q/Km	In Air : 17 A	: 0.19 kA
Insulation Minimum : 50 MQ/Km		

#### NYMHY 3x2.5 MM<sup>2</sup>



#### DIMENSIONAL & MECHANICAL DATA

Nominal Cross and Sectional Area	:	2.5	mm <sup>2</sup>
Maximum Diameter of Wire	:	0.25	pcs
Insulation	:	0.8	mm
Outer Sheath	:	1.1	mm
Overall Diameter	:	10.0	mm
Net Weight	:	161	Kg/Km
Bending Radius Minimum	:	190	mm
Standart Delivery Length	:	100 or 2000	M

#### ELEKTRIKAL DATA

Resistance at 20 °C	Current Carrying Capacity at 30 °C	Short Circuit Current of Conductor at 1.0 sec
DC Conductor Maximal : 7.98 Q/Km	In Air : 22 A	: 0.32 kA
Insulation Minimum : 50 MQ/Km		



## KATALOG KABEL SUPREME

### FLEXIBLE CABLE NYMHY 300/500 VOLT

#### NYMHY 4x0.75 MM<sup>2</sup>



#### DIMENSIONAL & MECHANICAL DATA

Nominal Cross and Sectional Area	:	0.75	mm <sup>2</sup>
Maximum Diameter of Wire	:	0.2	pcs
Insulation	:	0.6	mm
Outer Sheath	:	0.8	mm
Overall Diameter	:	7.3	mm
Net Weight	:	77	Kg/Km
Bending Radius Minimum	:	130	mm
Standart Delivery Length	:	100 or 2.000	M

#### ELEKTRIKAL DATA

##### Resistance at 20 °C

DC Conductor Maximal	:	26	Ω/Km
Insulation Minimum	:	50	MΩ/Km

##### Current Carrying Capacity at 30 °C

In Air	:	4	A
--------	---	---	---

##### Short Circuit Current of Conductor at 1.0 sec

:	0.10	kA
---	------	----

#### NYMHY 4x1.5 MM<sup>2</sup>



#### DIMENSIONAL & MECHANICAL DATA

Nominal Cross and Sectional Area	:	1.5	mm <sup>2</sup>
Maximum Diameter of Wire	:	0.25	pcs
Insulation	:	0.7	mm
Outer Sheath	:	1.0	mm
Overall Diameter	:	9.1	mm
Net Weight	:	130	Kg/Km
Bending Radius Minimum	:	170	mm
Standart Delivery Length	:	100 or 2000	M

#### ELEKTRIKAL DATA

##### Resistance at 20 °C

DC Conductor Maximal	:	13.3	Ω/Km
Insulation Minimum	:	50	MΩ/Km

##### Current Carrying Capacity at 30 °C

In Air	:	17	A
--------	---	----	---

##### Short Circuit Current of Conductor at 1.0 sec

:	0.19	kA
---	------	----



## KATALOG KABEL SUPREME

### FLEXIBLE CABLE NYMHY 300/500 VOLT

#### NYMHY 4x2.5 MM<sup>2</sup>



#### DIMENSIONAL & MECHANICAL DATA

Nominal Cross and Sectional Area	:	2.5	mm <sup>2</sup>
Maximum Diameter of Wire	:	0.25	pcs
Insulation	:	0.8	mm
Outer Sheath	:	1.1	mm
Overall Diameter	:	10.9	mm
Net Weight	:	195	Kg/Km
Bending Radius Minimum	:	200	mm
Standart Delivery Length	:	100 or 2000	M

#### ELEKTRIKAL DATA

Resistance at 20 °C	Current Carrying Capacity at 30 °C	Short Circuit Current of Conductor at 1.0 sec
DC Conductor Maximal : 7.98 Q/Km	In Air : 22 A	: 0.32 kA
Insulation Minimum : 50 MQ/Km		