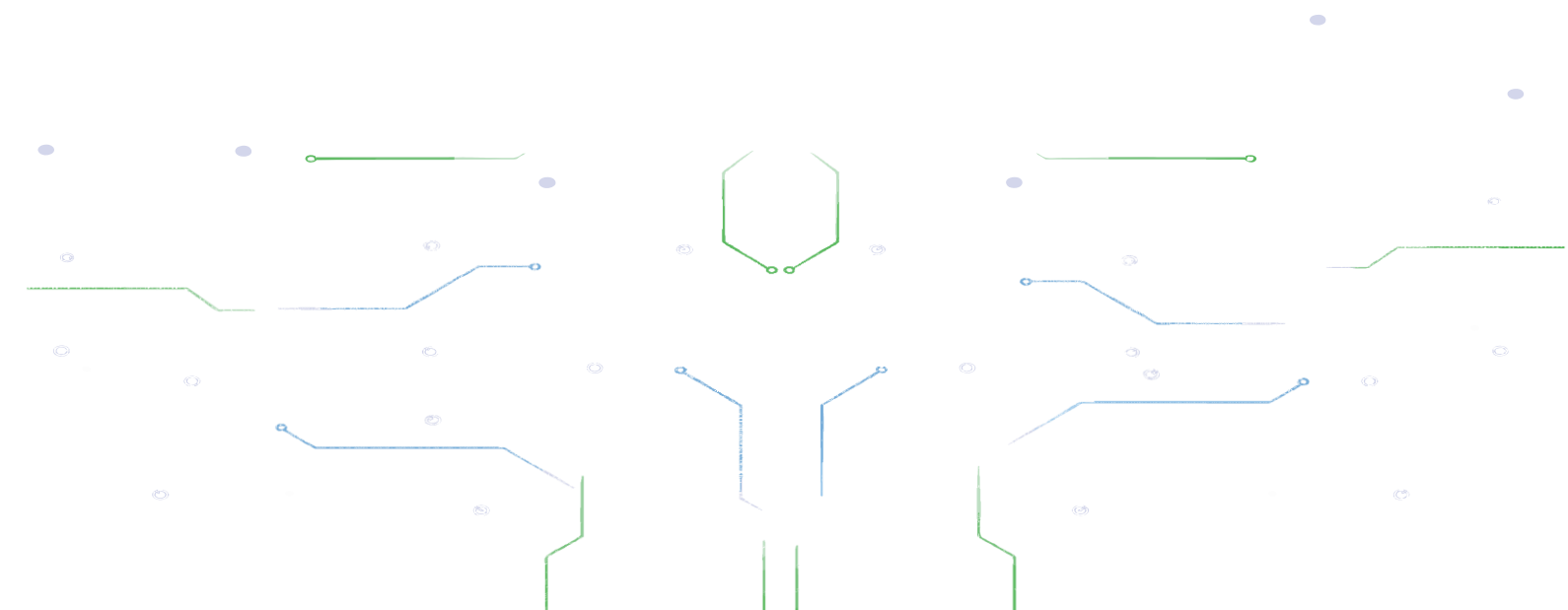


# **Lakuaja.com**



## **Lakuaja.com – PT. OPS Sinergi Indonesia**

Lakuaja.com adalah situs onlineshop yang berdiri di bawah PT. OPS Sinergi Indonesia. Saat ini menyediakan berbagai kebutuhan elektrik seperti Kabel Supreme, Lampu Philips, Schneider Electric, Legrand, Kabel Tray, Kap Lampu dan aksesoris listrik lainnya.





## KATALOG KABEL SUPREME

### FLEXIBLE CABLE NYHYH 450/750 VOLT

#### NYHYH 4X0.75 MM<sup>2</sup>



#### DIMENSIONAL & MECHANICAL DATA

Nominal Cross and Sectional Area	:	0.75	mm <sup>2</sup>
Maximum Diameter of Wire	:	0.2	pcs
Insulation	:	0.6	mm
Outer Sheath	:	0.8	mm
Overall Diameter	:	7.3	mm
Net Weight	:	77	Kg/Km
Bending Radius Minimum	:	51	mm
Standart Delivery Length	:	100 or 2.000	M

#### ELEKTRIKAL DATA

##### Resistance at 20 °C

DC Conductor Maximal	:	26.0	Ω/Km
Insulation Minimum	:	50	MΩ/Km

##### Current Carrying Capacity at 30 °C

In Air	:	6	A
In Ground	:	0.09	A

#### NYHYH 4X1.5 MM<sup>2</sup>



#### DIMENSIONAL & MECHANICAL DATA

Nominal Cross and Sectional Area	:	1.5	mm <sup>2</sup>
Maximum Diameter of Wire	:	0.25	pcs
Insulation	:	0.7	mm
Outer Sheath	:	1.0	mm
Overall Diameter	:	9.1	mm
Net Weight	:	130	Kg/Km
Bending Radius Minimum	:	64	mm
Standart Delivery Length	:	1000	M

#### ELEKTRIKAL DATA

##### Resistance at 20 °C

DC Conductor Maximal	:	13.3	Ω/Km
Insulation Minimum	:	50	MΩ/Km

##### Current Carrying Capacity at 30 °C

In Air	:	15	A
In Ground	:	0.17	A



## KATALOG KABEL SUPREME

### FLEXIBLE CABLE NYHY 450/750 VOLT

#### NYHY 4X2.5 MM<sup>2</sup>



#### DIMENSIONAL & MECHANICAL DATA

Nominal Cross and Sectional Area	:	2.5	mm <sup>2</sup>
Maximum Diameter of Wire	:	0.25	pcs
Insulation	:	0.8	mm
Outer Sheath	:	1.1	mm
Overall Diameter	:	10.9	mm
Net Weight	:	195	Kg/Km
Bending Radius Minimum	:	77	mm
Standart Delivery Length	:	1000	M

#### ELEKTRIKAL DATA

##### Resistance at 20 °C

DC Conductor Maximal	:	7.98	Ω/Km
Insulation Minimum	:	50	MΩ/Km

##### Current Carrying Capacity at 30 °C

In Air	:	20	A
In Ground	:	0.29	A

#### NYHY 4X4 MM<sup>2</sup>



#### DIMENSIONAL & MECHANICAL DATA

Nominal Cross and Sectional Area	:	4	mm <sup>2</sup>
Maximum Diameter of Wire	:	0.3	pcs
Insulation	:	0.8	mm
Outer Sheath	:	1.2	mm
Overall Diameter	:	12.3	mm
Net Weight	:	273	Kg/Km
Bending Radius Minimum	:	86	mm
Standart Delivery Length	:	1000	M

#### ELEKTRIKAL DATA

##### Resistance at 20 °C

DC Conductor Maximal	:	4.95	Ω/Km
Insulation Minimum	:	50	MΩ/Km

##### Current Carrying Capacity at 30 °C

In Air	:	26	A
In Ground	:	0.46	A



## KATALOG KABEL SUPREME

### FLEXIBLE CABLE NYHY 450/750 VOLT

#### NYHY 4X6 MM<sup>2</sup>



#### DIMENSIONAL & MECHANICAL DATA

Nominal Cross and Sectional Area	:	6	mm <sup>2</sup>
Maximum Diameter of Wire	:	0.3	pcs
Insulation	:	0.8	mm
Outer Sheath	:	1.3	mm
Overall Diameter	:	13.8	mm
Net Weight	:	369	Kg/Km
Bending Radius Minimum	:	97	mm
Standart Delivery Length	:	1000	M

#### ELEKTRIKAL DATA

##### Resistance at 20 °C

DC Conductor Maximal	:	3.30	Ω/Km
Insulation Minimum	:	50	MΩ/Km

##### Current Carrying Capacity at 30 °C

In Air	:	33	A
In Ground	:	0.69	A

#### NYHY 4X10 MM<sup>2</sup>



#### DIMENSIONAL & MECHANICAL DATA

Nominal Cross and Sectional Area	:	10	mm <sup>2</sup>
Maximum Diameter of Wire	:	0.4	pcs
Insulation	:	1.0	mm
Outer Sheath	:	1.5	mm
Overall Diameter	:	17.7	mm
Net Weight	:	616	Kg/Km
Bending Radius Minimum	:	124	mm
Standart Delivery Length	:	1000	M

#### ELEKTRIKAL DATA

##### Resistance at 20 °C

DC Conductor Maximal	:	1.91	Ω/Km
Insulation Minimum	:	50	MΩ/Km

##### Current Carrying Capacity at 30 °C

In Air	:	45	A
In Ground	:	1.15	A



## KATALOG KABEL SUPREME

### FLEXIBLE CABLE NYHY 450/750 VOLT

#### NYHY 4X16 MM<sup>2</sup>



#### DIMENSIONAL & MECHANICAL DATA

Nominal Cross and Sectional Area	:	16	mm <sup>2</sup>
Maximum Diameter of Wire	:	0.4	pcs
Insulation	:	1.0	mm
Outer Sheath	:	1.8	mm
Overall Diameter	:	22.9	mm
Net Weight	:	986	Kg/Km
Bending Radius Minimum	:	160	mm
Standart Delivery Length	:	1000	M

#### ELEKTRIKAL DATA

##### Resistance at 20 °C

DC Conductor Maximal	:	1.21	Ω/Km
Insulation Minimum	:	40	MΩ/Km

##### Current Carrying Capacity at 30 °C

In Air	:	61	A
In Ground	:	1.84	A

#### NYHY 4X25 MM<sup>2</sup>



#### DIMENSIONAL & MECHANICAL DATA

Nominal Cross and Sectional Area	:	25	mm <sup>2</sup>
Maximum Diameter of Wire	:	0.4	pcs
Insulation	:	1.2	mm
Outer Sheath	:	1.8	mm
Overall Diameter	:	28	mm
Net Weight	:	1.478	Kg/Km
Bending Radius Minimum	:	196	mm
Standart Delivery Length	:	1000	M

#### ELEKTRIKAL DATA

##### Resistance at 20 °C

DC Conductor Maximal	:	0.780	Ω/Km
Insulation Minimum	:	40	MΩ/Km

##### Current Carrying Capacity at 30 °C

In Air	:	83	A
In Ground	:	2.87	A



## KATALOG KABEL SUPREME

### FLEXIBLE CABLE NYHYH 450/750 VOLT

#### NYHYH 4X35 MM<sup>2</sup>



#### DIMENSIONAL & MECHANICAL DATA

Nominal Cross and Sectional Area	:	35	mm <sup>2</sup>
Maximum Diameter of Wire	:	0.4	pcs
Insulation	:	1.2	mm
Outer Sheath	:	1.8	mm
Overall Diameter	:	30.5	mm
Net Weight	:	1.910	Kg/Km
Bending Radius Minimum	:	214	mm
Standart Delivery Length	:	1000	M

#### ELEKTRIKAL DATA

##### Resistance at 20 °C

DC Conductor Maximal	:	0.554	Ω/Km
Insulation Minimum	:	40	MΩ/Km

##### Current Carrying Capacity at 30 °C

In Air	:	103	A
In Ground	:	4.03	A

#### NYHYH 4X50 MM<sup>2</sup>



#### DIMENSIONAL & MECHANICAL DATA

Nominal Cross and Sectional Area	:	50	mm <sup>2</sup>
Maximum Diameter of Wire	:	0.4	pcs
Insulation	:	1.4	mm
Outer Sheath	:	1.8	mm
Overall Diameter	:	36.6	mm
Net Weight	:	2.743	Kg/Km
Bending Radius Minimum	:	256	mm
Standart Delivery Length	:	1000	M

#### ELEKTRIKAL DATA

##### Resistance at 20 °C

DC Conductor Maximal	:	0.386	Ω/Km
Insulation Minimum	:	30	MΩ/Km

##### Current Carrying Capacity at 30 °C

In Air	:	132	A
In Ground	:	5.75	A



## KATALOG KABEL SUPREME

### FLEXIBLE CABLE NYHYH 450/750 VOLT

#### NYHYH 4X70 MM<sup>2</sup>



#### DIMENSIONAL & MECHANICAL DATA

Nominal Cross and Sectional Area	:	70	mm <sup>2</sup>
Maximum Diameter of Wire	:	0.5	pcs
Insulation	:	1.4	mm
Outer Sheath	:	1.9	mm
Overall Diameter	:	40.9	mm
Net Weight	:	3.675	Kg/Km
Bending Radius Minimum	:	287	mm
Standart Delivery Length	:	1000	M

#### ELEKTRIKAL DATA

##### Resistance at 20 °C

DC Conductor Maximal	:	0.272	Ω/Km
Insulation Minimum	:	30	MΩ/Km

##### Current Carrying Capacity at 30 °C

In Air	:	165	A
In Ground	:	8.05	A

#### NYHYH 4X95 MM<sup>2</sup>



#### DIMENSIONAL & MECHANICAL DATA

Nominal Cross and Sectional Area	:	95	mm <sup>2</sup>
Maximum Diameter of Wire	:	0.5	pcs
Insulation	:	1.6	mm
Outer Sheath	:	2.0	mm
Overall Diameter	:	48.3	mm
Net Weight	:	4.887	Kg/Km
Bending Radius Minimum	:	338	mm
Standart Delivery Length	:	500	M

#### ELEKTRIKAL DATA

##### Resistance at 20 °C

DC Conductor Maximal	:	0.206	Ω/Km
Insulation Minimum	:	30	MΩ/Km

##### Current Carrying Capacity at 30 °C

In Air	:	197	A
In Ground	:	10.92	A