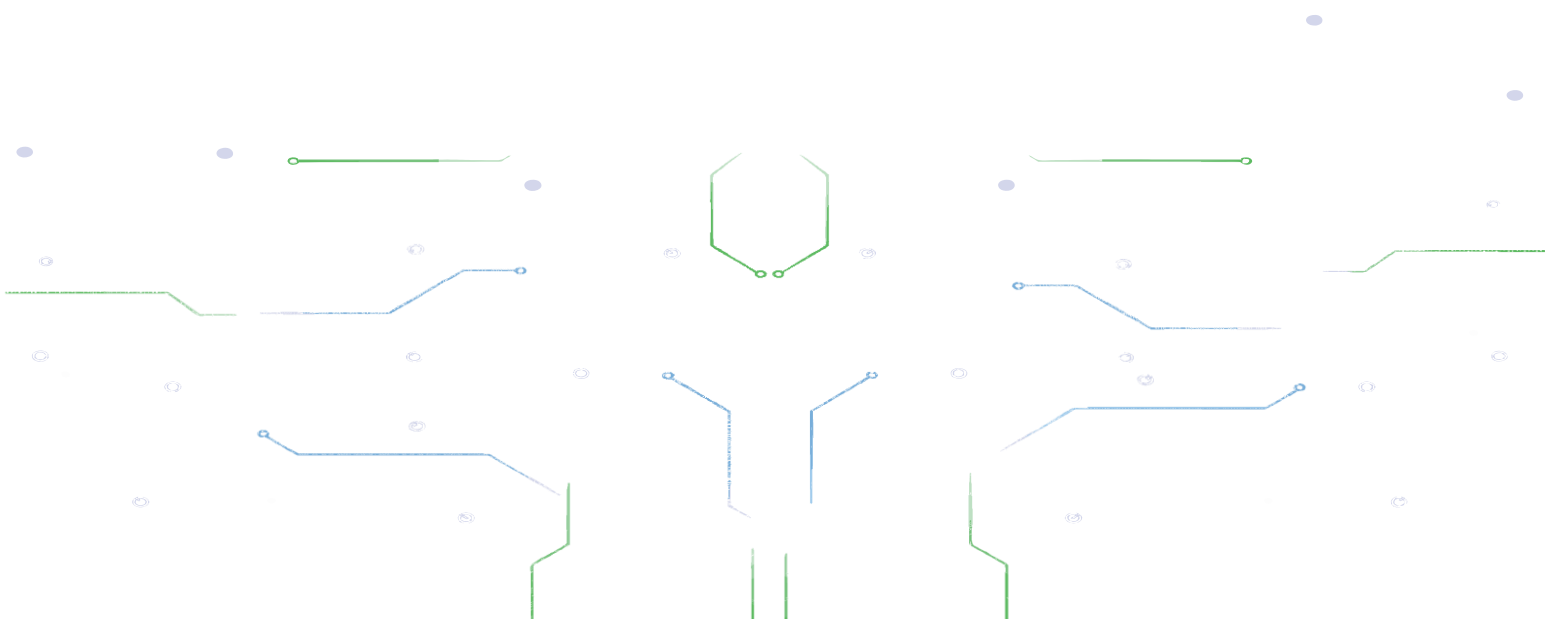


# **lakuaja.com**



## **Lakuaja.com – PT. OPS Sinergi Indonesia**

Lakuaja.com adalah situs onlineshop yang berdiri di bawah PT. OPS Sinergi Indonesia. Saat ini menyediakan berbagai kebutuhan elektrik seperti Kabel Supreme, Lampu Philips, Schneider Electric, Legrand, Kabel Tray, Kap Lampu dan aksesoris listrik lainnya.





## KATALOG KABEL SUPREME

### MEDIUM VOLATAGE CABLE N2XSY 12/20(24) kV

#### N2XSY 1X35 MM<sup>2</sup>



#### DIMENSIONAL & MECHANICAL DATA

Nominal Cross and Sectional Area	:	35	mm <sup>2</sup>
Conductor Diameter (approx)	:	7.1	pcs
Nominal Insulation Tickness	:	5.5	mm
Insulation Diameter	:	19.7	mm
Outer Sheath	:	1.8	mm
Overall Diameter	:	26	mm
Net Weight	:	1000	Kg/Km
Bending Radius Minimum	:	330	mm
Standart Delivery Length	:	1000	M

#### ELEKTRIKAL DATA

Resistance at 20 °C	Current Carrying Capacity at 30 °C	Short Circuit Current of Conductor at 1.0 sec
DC Conductor Maximal : 0.524 Ω/Km	In Air : 199 A	: 5.18 kA
Insulation Minimum : 1400 MΩ/Km	In Ground : 181 A	

#### N2XSY 1X50 MM<sup>2</sup>



#### DIMENSIONAL & MECHANICAL DATA

Nominal Cross and Sectional Area	:	50	mm <sup>2</sup>
Conductor Diameter (approx)	:	8.25	pcs
Nominal Insulation Tickness	:	5.5	mm
Insulation Diameter	:	20.9	mm
Outer Sheath	:	1.8	mm
Overall Diameter	:	27	mm
Net Weight	:	1200	Kg/Km
Bending Radius Minimum	:	350	mm
Standart Delivery Length	:	1000	M

#### ELEKTRIKAL DATA

Resistance at 20 °C	Current Carrying Capacity at 30 °C	Short Circuit Current of Conductor at 1.0 sec
DC Conductor Maximal : 0.387 Ω/Km	In Air : 238 A	: 10.26 kA
Insulation Minimum : 1300 MΩ/Km	In Ground : 214 A	



## KATALOG KABEL SUPREME

### MEDIUM VOLATAGE CABLE N2XSY 12/20(24) kV

#### N2XSY 1X70 MM<sup>2</sup>



#### DIMENSIONAL & MECHANICAL DATA

Nominal Cross and Sectional Area	:	70	mm <sup>2</sup>
Conductor Diameter (approx)	:	9.9	pcs
Nominal Insulation Tickness	:	5.5	mm
Insulation Diameter	:	22.5	mm
Outer Sheath	:	1.9	mm
Overall Diameter	:	29	mm
Net Weight	:	1400	Kg/Km
Bending Radius Minimum	:	390	mm
Standart Delivery Length	:	1000	M

#### ELEKTRIKAL DATA

Resistance at 20 °C	Current Carrying Capacity at 30 °C	Short Circuit Current of Conductor at 1.0 sec
DC Conductor Maximal : 0.268 Ω/Km	In Air : 296 A	: 10.26 kA
Insulation Minimum : 1100 MΩ/Km	In Ground : 262 A	

#### N2XSY 1X95 MM<sup>2</sup>



#### DIMENSIONAL & MECHANICAL DATA

Nominal Cross and Sectional Area	:	95	mm <sup>2</sup>
Conductor Diameter (approx)	:	11.7	pcs
Nominal Insulation Tickness	:	5.5	mm
Insulation Diameter	:	24.3	mm
Outer Sheath	:	1.9	mm
Overall Diameter	:	31	mm
Net Weight	:	1700	Kg/Km
Bending Radius Minimum	:	420	mm
Standart Delivery Length	:	1000	M

#### ELEKTRIKAL DATA

Resistance at 20 °C	Current Carrying Capacity at 30 °C	Short Circuit Current of Conductor at 1.0 sec
DC Conductor Maximal : 0.193 Ω/Km	In Air : 358 A	: 13.88 kA
Insulation Minimum : 1000 MΩ/Km	In Ground : 312 A	



## KATALOG KABEL SUPREME

### MEDIUM VOLATAGE CABLE N2XSY 12/20(24) kV

#### N2XSY 1X120 MM<sup>2</sup>



#### DIMENSIONAL & MECHANICAL DATA

Nominal Cross and Sectional Area	:	120	mm <sup>2</sup>
Conductor Diameter (approx)	:	13.1	pcs
Nominal Insulation Tickness	:	5.5	mm
Insulation Diameter	:	25.7	mm
Outer Sheath	:	2.0	mm
Overall Diameter	:	32	mm
Net Weight	:	2000	Kg/Km
Bending Radius Minimum	:	450	mm
Standart Delivery Length	:	1000	M

#### ELEKTRIKAL DATA

Resistance at 20 °C		Current Carrying Capacity at 30 °C	Short Circuit Current of Conductor at 1.0 sec
DC Conductor Maximal	: 0.153 Q/Km	In Air : 412 A	: 17.49 kA
Insulation Minimum	: 900 MQ/Km	In Ground : 353 A	

#### N2XSY 1X150 MM<sup>2</sup>



#### DIMENSIONAL & MECHANICAL DATA

Nominal Cross and Sectional Area	:	150	mm <sup>2</sup>
Conductor Diameter (approx)	:	14.3	pcs
Nominal Insulation Tickness	:	5.5	mm
Insulation Diameter	:	26.9	mm
Outer Sheath	:	2.0	mm
Overall Diameter	:	34	mm
Net Weight	:	2300	Kg/Km
Bending Radius Minimum	:	480	mm
Standart Delivery Length	:	1000	M

#### ELEKTRIKAL DATA

Resistance at 20 °C		Current Carrying Capacity at 30 °C	Short Circuit Current of Conductor at 1.0 sec
DC Conductor Maximal	: 0.124 Q/Km	In Air : 466 A	: 21.81 kA
Insulation Minimum	: 900 MQ/Km	In Ground : 394 A	



## KATALOG KABEL SUPREME

MEDIUM VOLATAGE CABLE N2XSY 12/20(24) kV

### N2XSY 1X185 MM<sup>2</sup>



#### DIMENSIONAL & MECHANICAL DATA

Nominal Cross and Sectional Area	:	185	mm <sup>2</sup>
Conductor Diameter (approx)	:	16.3	pcs
Nominal Insulation Tickness	:	5.5	mm
Insulation Diameter	:	28.9	mm
Outer Sheath	:	2.1	mm
Overall Diameter	:	36	mm
Net Weight	:	2700	Kg/Km
Bending Radius Minimum	:	520	mm
Standart Delivery Length	:	1000	M

#### ELEKTRIKAL DATA

Resistance at 20 °C	Current Carrying Capacity at 30 °C	Short Circuit Current of Conductor at 1.0 sec
DC Conductor Maximal : 0.0991 Q/Km	In Air : 532 A	26.86 kA
Insulation Minimum : 800 MQ/Km	In Ground : 445 A	

### N2XSY 1x240 MM<sup>2</sup>



#### DIMENSIONAL & MECHANICAL DATA

Nominal Cross and Sectional Area	:	240	mm <sup>2</sup>
Conductor Diameter (approx)	:	18.2	pcs
Nominal Insulation Tickness	:	5.5	mm
Insulation Diameter	:	31.3	mm
Outer Sheath	:	2.1	mm
Overall Diameter	:	38	mm
Net Weight	:	3300	Kg/Km
Bending Radius Minimum	:	570	mm
Standart Delivery Length	:	1000	M

#### ELEKTRIKAL DATA

Resistance at 20 °C	Current Carrying Capacity at 30 °C	Short Circuit Current of Conductor at 1.0 sec
DC Conductor Maximal : 0.0754 Q/Km	In Air : 627 A	34.78 kA
Insulation Minimum : 700 MQ/Km	In Ground : 513 A	



## KATALOG KABEL SUPREME

### MEDIUM VOLATAGE CABLE N2XSY 12/20(24) kV

#### N2XSY 1x300 MM<sup>2</sup>



#### DIMENSIONAL & MECHANICAL DATA

Nominal Cross and Sectional Area	:	300	mm <sup>2</sup>
Conductor Diameter (approx)	:	20.9	pcs
Nominal Insulation Tickness	:	5.5	mm
Insulation Diameter	:	33.5	mm
Outer Sheath	:	2.2	mm
Overall Diameter	:	40	mm
Net Weight	:	4000	Kg/Km
Bending Radius Minimum	:	610	mm
Standart Delivery Length	:	1000	M

#### ELEKTRIKAL DATA

Resistance at 20 °C		Current Carrying Capacity at 30 °C	Short Circuit Current of Conductor at 1.0 sec
DC Conductor Maximal	: 0.0601 Ω/Km	In Air : 629 A	43.41 kA
Insulation Minimum	: 700 MΩ/Km	In Ground : 554 A	

#### N2XSY 1x400 MM<sup>2</sup>



#### DIMENSIONAL & MECHANICAL DATA

Nominal Cross and Sectional Area	:	400	mm <sup>2</sup>
Conductor Diameter (approx)	:	23.7	pcs
Nominal Insulation Tickness	:	5.5	mm
Insulation Diameter	:	36.3	mm
Outer Sheath	:	2.3	mm
Overall Diameter	:	44	mm
Net Weight	:	4900	Kg/Km
Bending Radius Minimum	:	670	mm
Standart Delivery Length	:	500	M

#### ELEKTRIKAL DATA

Resistance at 20 °C		Current Carrying Capacity at 30 °C	Short Circuit Current of Conductor at 1.0 sec
DC Conductor Maximal	: 0.0470 Ω/Km	In Air : 819 A	57.79 kA
Insulation Minimum	: 600 MΩ/Km	In Ground : 647 A	



## KATALOG KABEL SUPREME

### MEDIUM VOLATAGE CABLE N2XSY 12/20(24) kV

#### N2XSY 1x500 MM<sup>2</sup>



#### DIMENSIONAL & MECHANICAL DATA

Nominal Cross and Sectional Area	:	500	mm <sup>2</sup>
Conductor Diameter (approx)	:	26.6	pcs
Nominal Insulation Tickness	:	5.5	mm
Insulation Diameter	:	39.2	mm
Outer Sheath	:	2.4	mm
Overall Diameter	:	47	mm
Net Weight	:	6100	Kg/Km
Bending Radius Minimum	:	730	mm
Standart Delivery Length	:	500	M

#### ELEKTRIKAL DATA

Resistance at 20 °C		Current Carrying Capacity at 30 °C		Short Circuit Current of Conductor at 1.0 sec	
DC Conductor Maximal	: 0.0366 Ω/Km	In Air	: 947 A	72.16 kA	
Insulation Minimum	: 600 MQ/Km	In Ground	: 720 A		

#### N2XSY 1x630 MM<sup>2</sup>



#### DIMENSIONAL & MECHANICAL DATA

Nominal Cross and Sectional Area	:	630	mm <sup>2</sup>
Conductor Diameter (approx)	:	30.3	pcs
Nominal Insulation Tickness	:	5.5	mm
Insulation Diameter	:	44.1	mm
Outer Sheath	:	2.5	mm
Overall Diameter	:	53	mm
Net Weight	:	7700	Kg/Km
Bending Radius Minimum	:	830	mm
Standart Delivery Length	:	500	M

#### ELEKTRIKAL DATA

Resistance at 20 °C		Current Carrying Capacity at 30 °C		Short Circuit Current of Conductor at 1.0 sec	
DC Conductor Maximal	: 0.0283 Ω/Km	In Air	: 1009 A	90.83 kA	
Insulation Minimum	: 500 MQ/Km	In Ground	: 782 A		